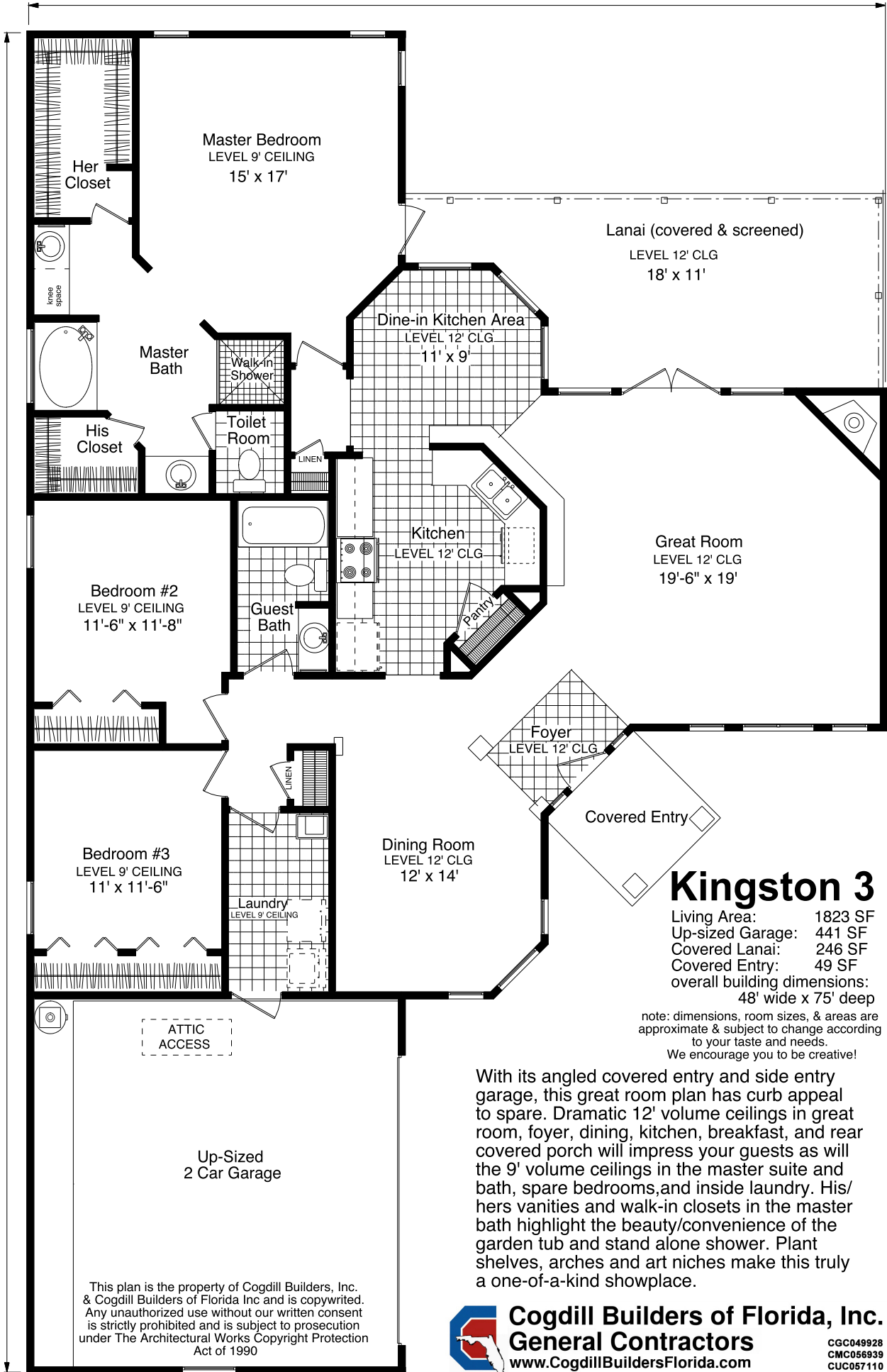


48'-0"

75'-0"



# Kingston 3

Living Area: 1823 SF  
 Up-sized Garage: 441 SF  
 Covered Lanai: 246 SF  
 Covered Entry: 49 SF  
 overall building dimensions:  
 48' wide x 75' deep

note: dimensions, room sizes, & areas are approximate & subject to change according to your taste and needs.  
 We encourage you to be creative!

With its angled covered entry and side entry garage, this great room plan has curb appeal to spare. Dramatic 12' volume ceilings in great room, foyer, dining, kitchen, breakfast, and rear covered porch will impress your guests as will the 9' volume ceilings in the master suite and bath, spare bedrooms, and inside laundry. His/hers vanities and walk-in closets in the master bath highlight the beauty/convenience of the garden tub and stand alone shower. Plant shelves, arches and art niches make this truly a one-of-a-kind showplace.

This plan is the property of Cogdill Builders, Inc. & Cogdill Builders of Florida Inc and is copyrighted. Any unauthorized use without our written consent is strictly prohibited and is subject to prosecution under The Architectural Works Copyright Protection Act of 1990

**Cogdill Builders of Florida, Inc.**  
**General Contractors**  
[www.CogdillBuildersFlorida.com](http://www.CogdillBuildersFlorida.com)

CGC049928  
 CMC056939  
 CUC057110